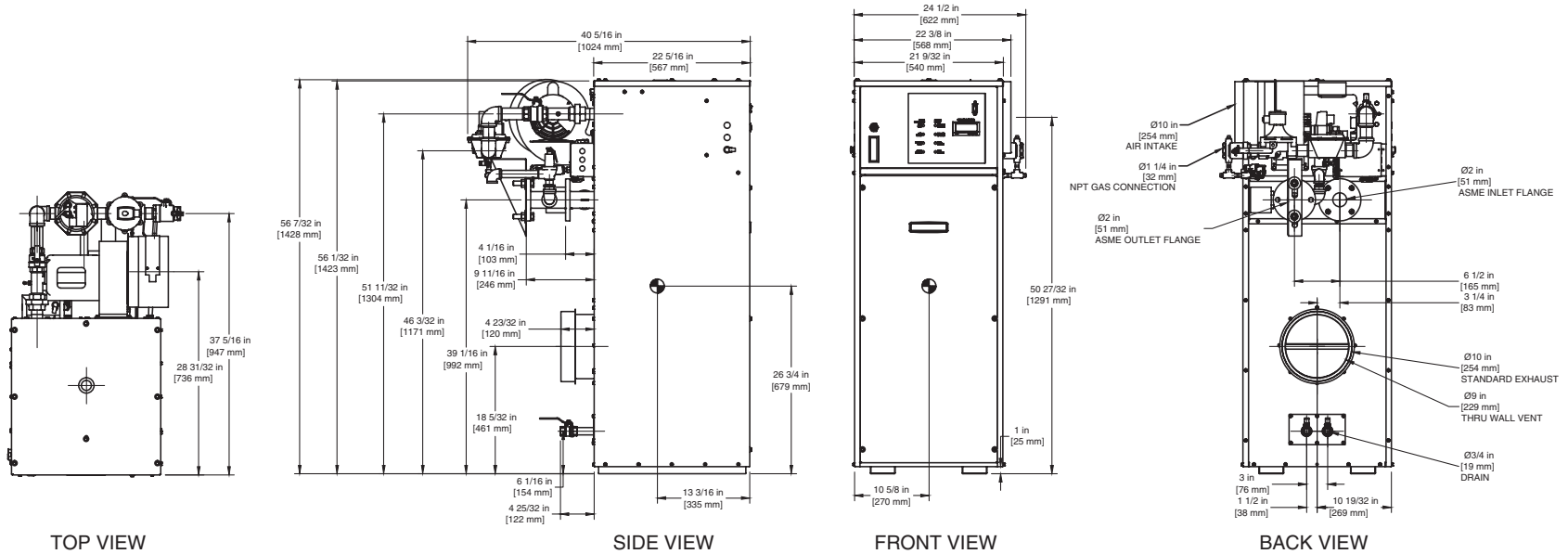


INDOOR UNIT

RSUB-66 REV D

CODE OPTIONS

CSD-1 Manual Reset LWCO



Notes:

1. Dimensions are approximate and should not be used to "rough-in" equipment.
2. Dimensions are subject to change without notice.

BOILER CERTIFIED RATINGS & CAPACITIES

Fuel Type	Natural/Propane Gas	Boiler FLA	5.3*
Input BTU/hr.	1,000,000 / 293 kW	Min. Gas Pressure Required	5"W.C.**
Output BTU/hr.	850,000 / 249 kW	Max. Gas Pressure Allowed	14"W.C.
Electrical Requirements	120 VAC / 1 ph / 60 hz	Operating Weight	578 lbs. / 262 kg.

BOILER TEMPERATURE RISE / PRESSURE DROP

20°F / 11.1°C				25°F / 13.9°C				30°F / 16.7°C				35°F / 19.4°C			
Flow Rate		Pressure Drop		Flow Rate		Pressure Drop		Flow Rate		Pressure Drop		Flow Rate		Pressure Drop	
GPM	L/s	Ft	kPa	GPM	L/s	Ft	kPa	GPM	L/s	Ft	kPa	GPM	L/s	Ft	kPa
85.0	5.4	3.44	10.1	68.0	4.3	2.27	6.7	56.7	3.6	1.60	4.8	48.6	3.1	1.20	3.6

BOILER / WATER HEATER TRIM & CONTROLS

Main Gas Valve	V4944B	Main Ball Valve	1 1/4"
Firing Valve	1 1/4"	Pilot Regulator	White-Rodgers 25M
Safety Valve	ASCO L8214G 1 1/4"	Air Switch	HUBA
Ignition Control	Honeywell RM 7897C	Blower Motor	Fasco 1/4 hp - FLA 3.
Operating Control (FB/FW)	Jumo	Relief Valve - FB	3/4" x 1" set @ 50 psi
High Limit	Honeywell L4008E	Relief Valve - FW	3/4" x 3/4" set @ 125 psi
		Flow Switch	TACO

WATER HEATER HOURLY RECOVERY CAPACITY (GPH & LPH)

40°F	22°C	60°F	33°C	80°F	44°C	100°F	56°C	120°F	67°C	140°F	78°C
2500	9450	1667	6300	1250	4725	1000	3780	833	3150	714	2700

Futera II 1000 model water heater not available for sale in Canada due to NRCan Regulations.

A.S.M.E.

ASME Sect IV Htg Surface	126.07 Sq. Ft. / 11.71 Sq. M.	Design Data	Max. 160 psig & 250°F
Water Volume	4.0 gal / 15.2 Liters		

* Add circulator amps.

** For incoming gas pressures lower than 5" W.C. natural or 11" W.C. propane, consult factory.

REP FIRM _____

SUBMITTED BY _____

JOB NAME _____

ARCHITECT _____

ENGINEER _____

CONTRACTOR _____

DATE _____

FUTERA II 1000

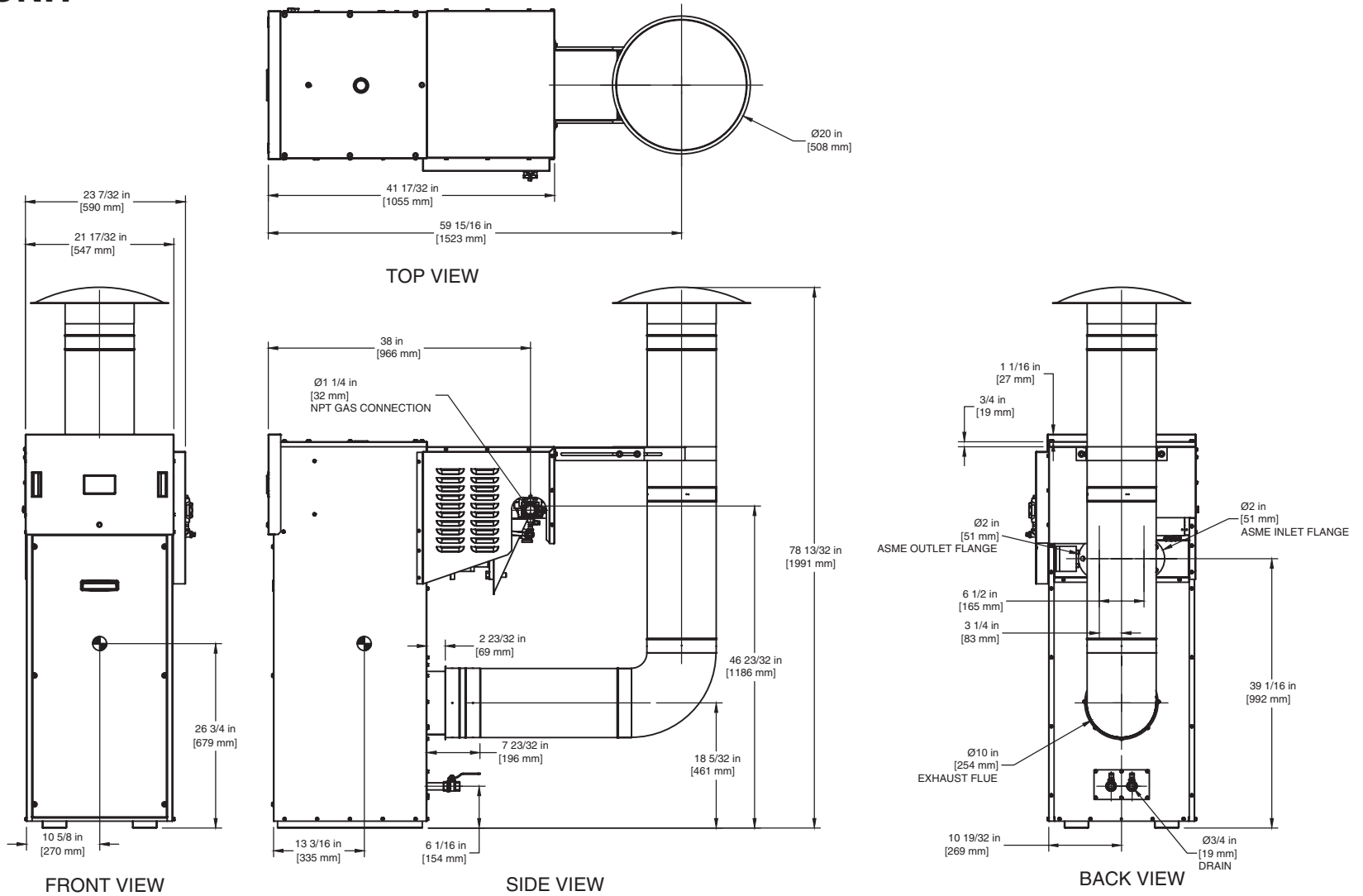
Category I or Category III Appliance

(see Installation and Operation Manual for venting information)



A Division of Mestec, Inc.
Westfield, MA 01085
(413) 568-9571

OUTDOOR UNIT



FUTERA II 1000

- Notes:**
1. Dimensions are approximate and should not be used to "rough-in" equipment.
 2. Dimensions are subject to change without notice.